



**OceanStor 5300 V3&5500 V3&5600 V3&5800
V3&6800 V3 Storage System
V300R003C20**

DeviceManager Demo Usage Guide

Issue 02
Date 2017-05-30

Copyright © Huawei Technologies Co., Ltd. 2017. All rights reserved.

No part of this document may be reproduced or transmitted in any form or by any means without prior written consent of Huawei Technologies Co., Ltd.

Trademarks and Permissions



HUAWEI and other Huawei trademarks are trademarks of Huawei Technologies Co., Ltd.

All other trademarks and trade names mentioned in this document are the property of their respective holders.

Notice

The purchased products, services and features are stipulated by the contract made between Huawei and the customer. All or part of the products, services and features described in this document may not be within the purchase scope or the usage scope. Unless otherwise specified in the contract, all statements, information, and recommendations in this document are provided "AS IS" without warranties, guarantees or representations of any kind, either express or implied.

The information in this document is subject to change without notice. Every effort has been made in the preparation of this document to ensure accuracy of the contents, but all statements, information, and recommendations in this document do not constitute a warranty of any kind, express or implied.

Huawei Technologies Co., Ltd.

Address: Huawei Industrial Base
Bantian, Longgang
Shenzhen 518129
People's Republic of China

Website: <http://e.huawei.com>

About This Document

Purpose

This document describes how to download and install OceanStor DeviceManager Demo, and how to use Demo and troubleshoot the common issues.





Intended Audience


This document is intended for:

- Installation and commissioning engineers
- Technical support engineers

Symbol Conventions

The symbols that may be found in this document are defined as follows.

Symbol	Description
 DANGER	Indicates an imminently hazardous situation which, if not avoided, will result in death or serious injury.
 WARNING	Indicates a potentially hazardous situation which, if not avoided, could result in death or serious injury.
 CAUTION	Indicates a potentially hazardous situation which, if not avoided, may result in minor or moderate injury.
 NOTICE	Indicates a potentially hazardous situation which, if not avoided, could result in equipment damage, data loss, performance deterioration, or unanticipated results. NOTICE is used to address practices not related to personal injury.

Symbol	Description
 NOTE	Calls attention to important information, best practices and tips. NOTE is used to address information not related to personal injury, equipment damage, and environment deterioration.

Change History

Changes between document issues are cumulative. The latest document issue contains all the changes made in earlier issues.

Issue 02 (2017-05-30)

This issue is the second official release.

Document description is optimized.

Issue 01 (2017-02-28)

This issue is the first official release.

Contents

About This Document.....	ii
1 Overview.....	1
2 Demo Usage Guide.....	2
2.1 Preparations.....	3
2.2 Installing Demo.....	5
2.3 Starting the Demo Service.....	7
2.4 Logging In to Demo.....	8
2.5 Experiencing Storage Systems' Functions.....	10
2.6 Operations.....	13
3 FAQ.....	15
3.1 What Can I Do When Demo Quits Unexpectedly During Startup?.....	16
3.2 Processes Occupied by the Demo.....	16
3.3 TCP Ports Occupied by the Demo.....	16
3.4 Solving the Problem of TCP Port Occupation by Other Processes.....	17
3.5 Disk Space Used by the Demo.....	18
3.6 How to initialize the Demo data?.....	18
A How to Get Help.....	19

1 Overview

OceanStor DeviceManager is an integrated storage management platform designed for all HUAWEI storage systems. Using OceanStor DeviceManager, you can configure, manage, and maintain your storage devices with ease.

As the needs grow for exchanges and trainings on HUAWEI storage device operation and management, the simulated version of OceanStor DeviceManager, OceanStor DeviceManager Demo (Demo for short), is developed to provide you with close-to-real environment experience and understandings on HUAWEI storage systems.

Version Mappings

Table 1-1 lists the version mappings of the Demo usage guide.

Table 1-1 Version mappings

Usage Guide Version	Product Version
OceanStor 5300 V3&5500 V3&5600 V3&5800 V3&6800 V3 Storage System V300R003C20 DeviceManager Demo Usage Guide 02	OceanStor 5300 V3&5500 V3&5600 V3&5800 V3&6800 V3 V300R003C20

Restrictions

Configuration data provided by Demo is generated based on scenario simulations. You can perform simulated operations such as viewing and configuring on Demo. However, the operation results may differ from those of OceanStor DeviceManager in actual scenarios.

2 Demo Usage Guide

About This Chapter

This section describes how to run Demo and how to use Demo to experience storage systems' functions and features.

[2.1 Preparations](#)

Check the Demo operating environment before running and using Demo.

[2.2 Installing Demo](#)

This section describes how to install Demo.

[2.3 Starting the Demo Service](#)

After installing Demo, you must start the Demo service to access Demo.

[2.4 Logging In to Demo](#)

You can log in to Demo to configure and use basic functions of DeviceManager.

[2.5 Experiencing Storage Systems' Functions](#)

HUAWEI storage systems are configured and managed by using OceanStor DeviceManager. You can use the simulated scenarios on Demo to experience various functions of the storage systems.

[2.6 Operations](#)

This section describes how to close or uninstall Demo.

2.1 Preparations

Check the Demo operating environment before running and using Demo.

Procedure

Step 1 Check the Demo operating environment.

1. Check the operating system compatibility of the host which the Demo will be installed on. [Table 2-1](#) lists the operating system compatibility.

Table 2-1 Host operating systems supporting Demo

Operating System
Windows 7 Professional (32/64)

2. Ensure the available system disk space of the host that the host running Demo is no less than 512 MB.

 **NOTE**

Demo is installed in system disk by default. You cannot change the installation path. The system disk with less than 512 MB capacity available may cause Demo running failure.

3. Check the compatibility of browser that will access Demo. [Table 2-2](#) lists the browser compatibility.

You can access the Demo through the browser on the host which the Demo is installed on, or access the Demo through the browser on other hosts which connect with the host which the Demo is installed on. See **Logging In to Demo** for more information.

Table 2-2 Browsers that are compatible with Demo

Operating System	Operating System Version	Fully Compatible Browser	Partially Compatible Browser
Windows	Windows 7 Professional (32/64)	- Internet Explorer 9 to 11 - Firefox 25 to 35 - Chrome 27 to 40	Internet Explorer 8
	Windows Server 2012	- Internet Explorer 10 to 11 - Firefox 25 to 35 - Chrome 27 to 40	-

Operating System	Operating System Version	Fully Compatible Browser	Partially Compatible Browser
	Windows 8	<ul style="list-style-type: none"> - Internet Explorer 10 to 11 - Firefox 25 to 35 - Chrome 27 to 40 	-
	Windows 8.1	<ul style="list-style-type: none"> - Internet Explorer 11 - Firefox 25 to 35 - Chrome 27 to 40 	-
MAC OS	MAC OS X 10.5+	Safari 5.5 to 8.0	-
Linux	Ubuntu 11	Firefox 25 to 35	-
<p>NOTE</p> <ul style="list-style-type: none"> - Fully Compatible: All functions are available, all tests pass, and ease-of-use experience is ensured. - Partially Compatible: All functions are available. Ease-of-use experience and performance are not ensured. 			

Step 2 Prepare the Demo installation file.


1. Obtaining software installation package.
 - If you are an enterprise network user, perform the following steps to obtain the software package:
 - a. Log in to the Huawei support website <http://support.huawei.com/enterprise>.
 - b. In the search field, enter product model (such as 5500 V3), and select a path from the paths that are automatically displayed to go to the document page of the product.
 - c. Click *OceanStor 5300 V3&5500 V3&5600 V3&5800 V3&6800 V3 Storage System V300R003C20 DeviceManager Demo Installation Package and Usage Guide*. In the upper right of the page that is displayed, click **Download** to download the compression package containing the Demo.

 **NOTE**

The compression package contains the **DeviceManagerDemo.zip** Demo installation package and operation guides.

- If you are a carrier network user, perform the following steps to obtain the software package:
 - a. Log in to the Huawei support website <http://support.huawei.com/carrier>.
 - b. In the search field, enter product model (such as 5500 V3), and select a path from the paths that are automatically displayed to go to the document page of the product.

- c. Click *OceanStor 5300 V3&5500 V3&5600 V3&5800 V3&6800 V3 Storage System V300R003C20 DeviceManager Demo Installation Package and Usage Guide*. In

the middle of the page that is displayed, click  to download the compression package containing the Demo.

 **NOTE**

The compression package contains the **DeviceManagerDemo.zip** Demo installation package and operation guides.

2. Download the verification tool and guide for OpenPGP signature.

 **NOTE**

Downloading address: http://support.huawei.com/enterprise/toolsinfo?lang=zh&idAbsPath=0602_ROOT&pid=0602_ROOT&show=showVDetail&toolId=TL1000000054.

3. See *OpenPGP Signature Verification Guide* to verify the integrity of the installation package.
4. Decompress the installation package to obtain the installation file.

----End

2.2 Installing Demo

This section describes how to install Demo.

Prerequisites

You have obtained the Demo installation file.

Procedure

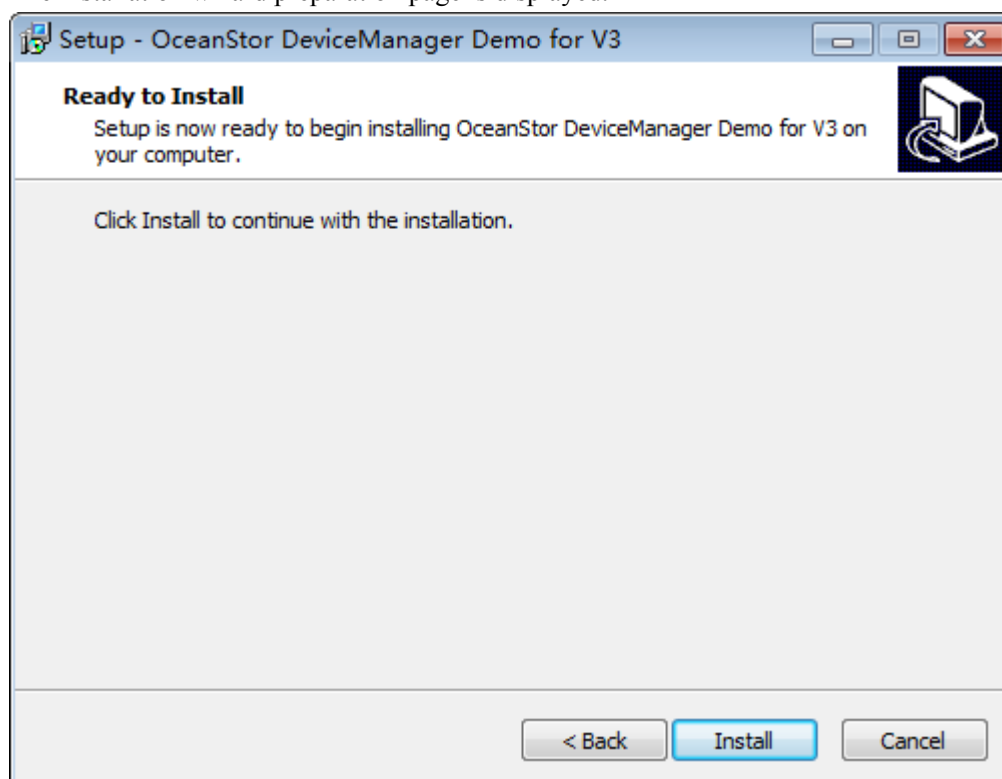
- Step 1** Double-click the installation file.

The installation wizard welcome page is displayed.



Step 2 Click **Next**.

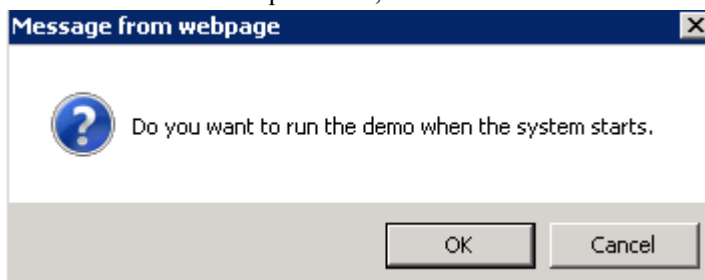
The installation wizard preparation page is displayed.



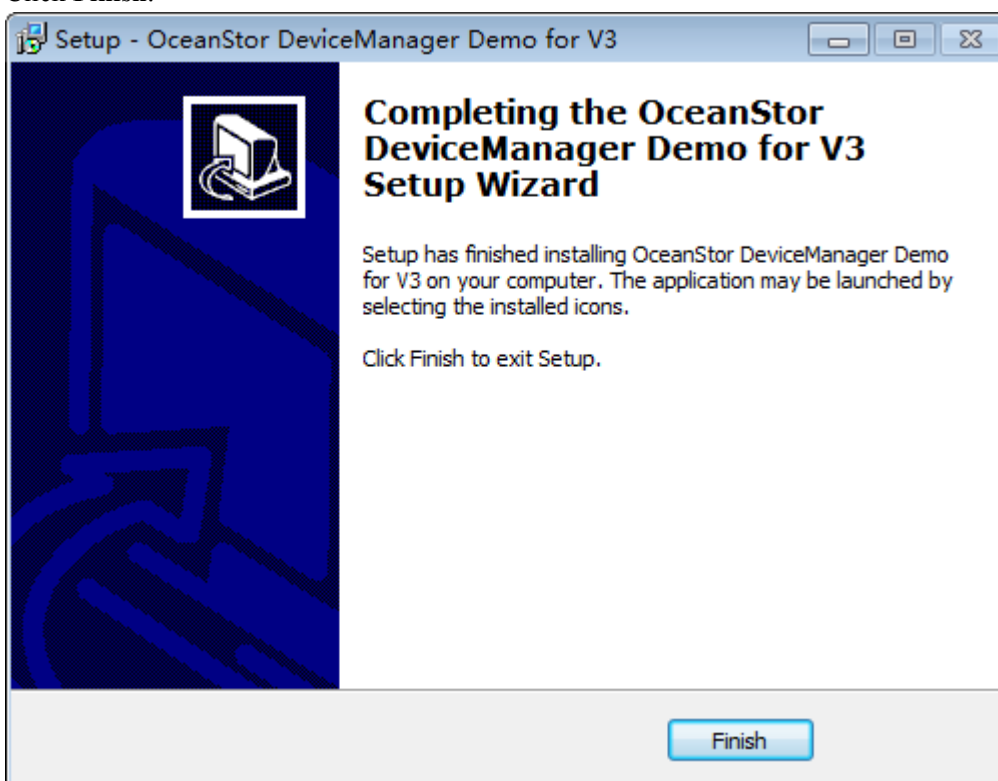
Step 3 Click **Install**.

The system starts to install Demo.

- Step 4** Before installation completes, the system prompts to run the Demo when the system starts or not. Based on actual requirement, select **OK** or **Cancel**.



- Step 5** Click **Finish**.



---End

Follow-up Procedure

Check whether the installation is correct.

1. Select **Start > All Programs**.

If the installation is correct, the **DeviceManagerDemoforTV300R003C20** menu item is added into **All Programs**.

2. Go to the root directory of system disk.

If the installation is correct, the **DeviceManagerDemoforTV300R003C20** folder is added into the root directory.

2.3 Starting the Demo Service

After installing Demo, you must start the Demo service to access Demo.

Prerequisites

- Demo has been installed.
- The 8088, 8989, and 8080 ports of the operating system are not used.

NOTE

If one of these ports is used by other applications, see [3.4 Solving the Problem of TCP Port Occupation by Other Processes](#).

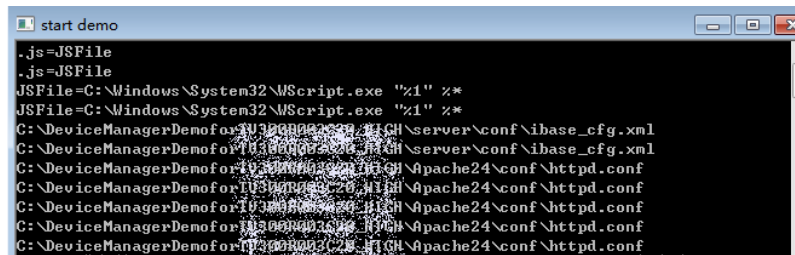
Context

- Only one Demo service can be started at a time.
- The Demo service can be started by the administrator only. If you are not an administrator, please select the **start demo**, right-click the blank area and choose **Administrator** from the shortcut menu that is displayed.

Procedure

- Step 1** In the desktop of your maintenance terminal, choose **Start > All Programs > DeviceManagerDemoforTV300R003C20 > start demo**.

The Demo service startup window is displayed. The startup window will automatically close after the Demo service is started.



```
start demo
..js=JSFile
.js=JSFile
JSFile=C:\Windows\System32\Script.exe "%1" %*
JSFile=C:\Windows\System32\Script.exe "%1" %*
C:\DeviceManagerDemoforTV300R003C20\server\conf\ibase_cfg.xml
C:\DeviceManagerDemoforTV300R003C20\server\conf\ibase_cfg.xml
C:\DeviceManagerDemoforTV300R003C20\server\conf\httpd.conf
C:\DeviceManagerDemoforTV300R003C20\server\conf\httpd.conf
C:\DeviceManagerDemoforTV300R003C20\server\conf\httpd.conf
C:\DeviceManagerDemoforTV300R003C20\server\conf\httpd.conf
C:\DeviceManagerDemoforTV300R003C20\server\conf\httpd.conf
C:\DeviceManagerDemoforTV300R003C20\server\conf\httpd.conf
```

----End

2.4 Logging In to Demo

You can log in to Demo to configure and use basic functions of DeviceManager.

Prerequisites

You have correctly installed Demo and started Demo services.

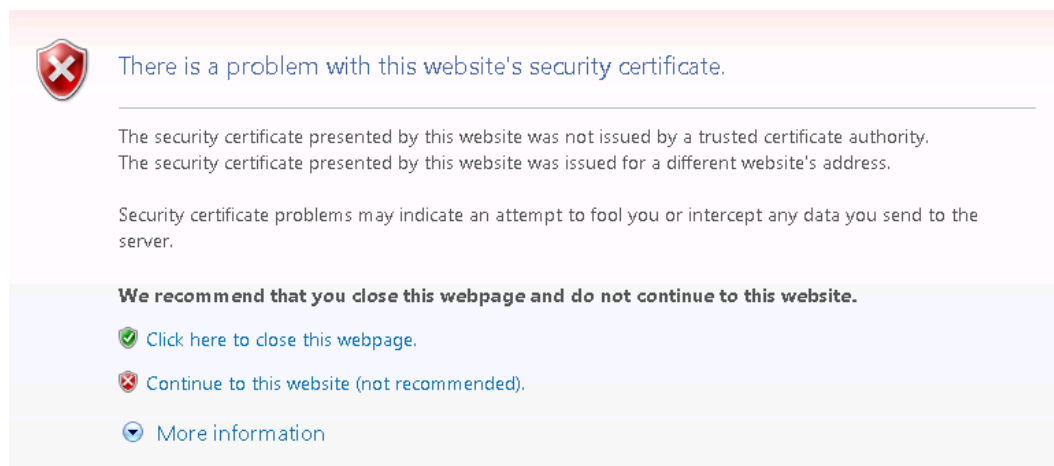
Procedure

- Step 1** Open a browser on the host. In the address box of your browser, enter **https://localhost:8088/** or **https://127.0.0.1:8088**. If you access the Demo through the browser on another host, enter **https://Host IP address:8088** in the address box.

NOTE

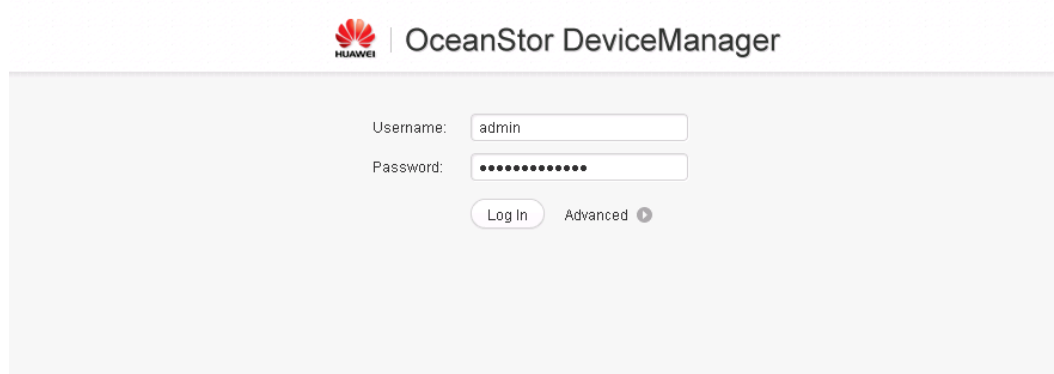
- Host IP address is the host that has started Demo service. Please ensure that the two hosts can access each other through the network.
- If you modify the port (default port is 8088) that Demo uses when starting the Demo service, you must change 8088 to the port you modify when logging in to Demo. Otherwise, the login fails.

The certificate error page is displayed. Here uses Windows Internet Explorer as an example.



Step 2 In the certificate error page, click **Continue to this website (not recommended)**.

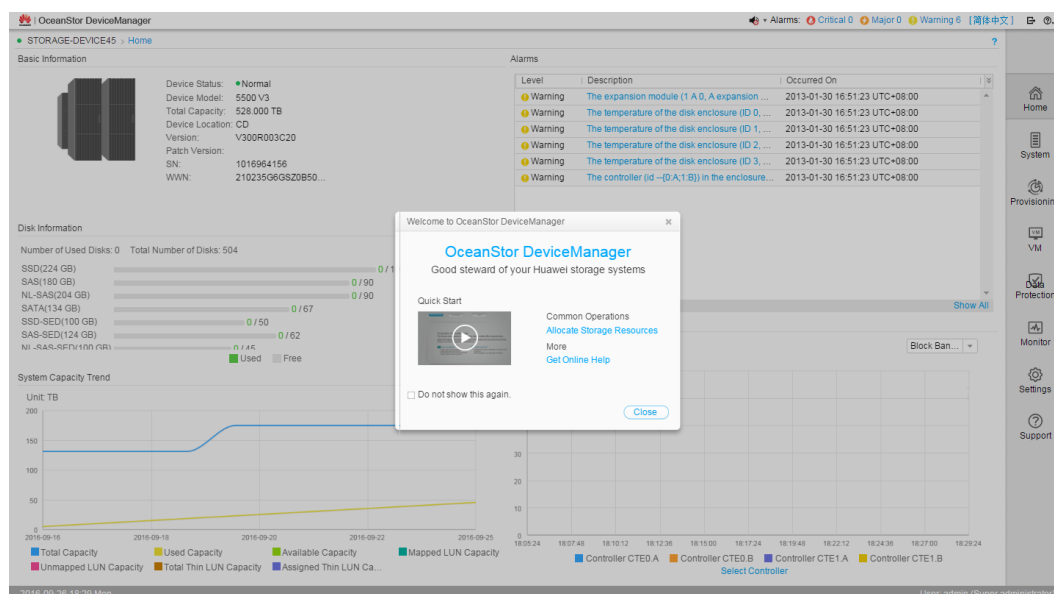
The Demo login page is displayed.



Step 3 In the Demo login page, click **Log In**.

 **NOTE**

A user name and the password are preset for Demo. Therefore, you do not need to enter the user name and the password.



---End

Follow-up Procedure

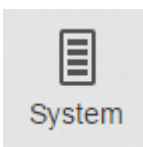
After you log in to Demo, you can experience functions and features provided by storage systems. You can also watch the quick start multimedia materials to learn common scenarios and their operation procedures.

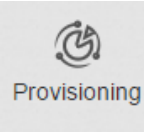
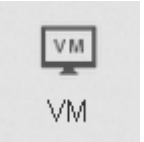
2.5 Experiencing Storage Systems' Functions



HUAWEI storage systems are configured and managed by using OceanStor DeviceManager. You can use the simulated scenarios on Demo to experience various functions of the storage systems.

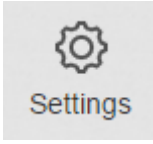
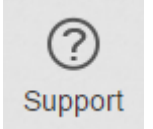
Table 2-3 provides common operation guidance. For detailed operation procedures, see the online help document in Demo.

Table 2-3 Common operation guidance

Menu	Function
 <p>System</p>	allows you to monitor storage devices and their components, and set related parameters.

Menu	Function
	<ul style="list-style-type: none"> ● LUN allows you to create and manage LUNs. ● Host allows you to create and manage hosts. ● Mapping View allows you to create and manage mapping views, and allocate storage resources to hosts. ● File System allows you to create and manage file systems. ● Share allows you to configure the NFS, CIFS or FTP sharing service for file systems or allows clients to access storage resources. ● User Authentication allows you to create and manage local users and user groups and access the system sharing service. ● Disk Domain allows you to create and manage disk pools. ● Storage Pool allows you to consolidate and centrally manage the storage space provided by various disks. ● Port allows you to view port information and create and manage port groups. ● Resource Performance Tuning allows you to view and manage resource optimization features. ● Application automatically allocates storage resources to service applications. ● vStore allows you to have comprehensive and independent storage resources. ● Batch Configuration allows you to batch import configuration files to the system and batch create storage resources.
	<p>VM allows to perform management operations on VMs. The operations include powering on/off a VM, restarting a VM, and so on.</p>

Menu	Function
 Data Protection	<ul style="list-style-type: none"> ● Snapshot allows you to manage the snapshots of storage devices. ● Remote Replication allows you to set up the a replication relationship between local and remote storage devices to copy data on the primary LUN to the secondary LUN. If data on a storage device is lost due to a disaster, data on the other storage device is available, ensuring data security and availability. ● Clone allows you to set up the pair relationship between the primary and secondary LUNs. You can obtain multiple physical copies of the primary LUN. Each of the physical copies can be used separately for a specific service. ● LUN Copy allows you to manage the LUN copies of storage devices. ● HyperMetro allows you to achieve real-time synchronization of resource data and hitless data access upon failures. ● HyperMirror allows you to create mirror LUNs for local LUNs or external LUNs to implement continuous application and data protection. ● HyperVault allows you to achieve fast backup and recovery of local file systems to and from local or remote devices. ● Remote Device allows you to create remote links among storage systems and transfer data.
 Monitor	<ul style="list-style-type: none"> ● Performance Monitoring allows you to monitor performance indicators of devices in real time. ● Alarms and Events allows you to view alarms and logs. ● Power Consumption allows you to view the total power consumption and power consumption on specific dates.

Menu	Function
	<ul style="list-style-type: none"> ● Initial Configuration allows you to configure basic device information, device time, disk domain, alarm notification, and to manage license files. ● Export Data allows you to export running data, system logs and disk logs. ● Restart Device allows you to restart storage devices. ● Power Off Device allows you to power off storage devices. ● Basic Information allows you to configure the storage device name, location, time, and DNS service. ● Storage Settings allows you to manage the block storage service, file storage service, and value-added service. ● Alarm Settings helps send alarm information to recipients' email boxes, mobile phones, or PCs. ● Monitor Settings allows you to configure performance monitoring parameters and performance monitoring file dump parameters. ● Permission Settings allows you to manage user accounts, configure security policy, configure domains and configure authorized IP addresses. ● License Management allows you to view license information, import and activate license files, and back up license. ● Anti-Virus allows you to scan files shared over CIFS in real time to improve the overall security capability of the system. <p>NOTE Demo does not support the following functions: importing license files, powering off devices, restarting devices, and automatically reporting alarms and events.</p>
	<p>Support provides the links to the documentation center, training center, and technical knowledge base.</p>

2.6 Operations

This section describes how to close or uninstall Demo.

[Table 2-4](#) describes the procedures for closing or uninstalling Demo.

Table 2-4 Operations

Operation	Objective	Procedure and Description
Stopping the Demo service	To avoid occupying system processes when the Demo service is not needed	<p>In the desktop of your maintenance terminal, choose Start > All Programs > DeviceManagerDemo-forTV300R003C20 > stop demo.</p> <p>A window is displayed indicating the Demo service stops. The window is closed automatically, meaning that the Demo service is stopped.</p>
Uninstalling Demo	To clear the Demo program and related files	<ol style="list-style-type: none">1. In the desktop of your maintenance terminal, choose Start > All Programs > DeviceManagerDemo-forTV300R003C20 > stop demo. A window is displayed indicating the Demo service stops. The window is closed automatically, meaning that the Demo service is stopped.2. Choose Start > All Programs > DeviceManagerDemoforTV300R003C20 > uninstall demo. A window is displayed asking you to confirm the uninstallation.3. Click Yes. A dialog box is displayed indicating that the uninstallation is completed.4. Click OK to finish uninstalling Demo.

3 FAQ

About This Chapter

This section describes how to handle problems that are commonly encountered during Demo use.

[3.1 What Can I Do When Demo Quits Unexpectedly During Startup?](#)

[3.2 Processes Occupied by the Demo](#)

[3.3 TCP Ports Occupied by the Demo](#)

[3.4 Solving the Problem of TCP Port Occupation by Other Processes](#)

[3.5 Disk Space Used by the Demo](#)

[3.6 How to initialize the Demo data?](#)

3.1 What Can I Do When Demo Quits Unexpectedly During Startup?

Question

What can I do when demo quits unexpectedly during startup?

Answer

This problem is caused by existence of multiple Java paths in the system environment variables, that is, other Java environments were installed before Demo. Handle the problem in the following procedure:

1. In the desktop of your maintenance terminal, choose **Start > Control Panel**.
2. Click **System**.
3. Select **Advanced System Settings**.
4. Click the **Advanced** tab.
5. Click **Environment Variables**.
6. Check the value of **Path** to see whether multiple Java paths exist.
 - If yes, keep the last Java path and delete other Java paths.
 - If no, contact technical support engineers.

3.2 Processes Occupied by the Demo

Question

Which processes are occupied by the Demo?

Answer

In **Task Manager**, the following processes occupied by the Demo exist by image path name in ascending order:

httpd.exe	2948	1	00	3,920 K	C:\DeviceManagerDemo\server\bin\httpd.exe
httpd.exe	4044	1	00	7,212 K	C:\DeviceManagerDemo\server\bin\httpd.exe
java.exe	8964	1	00	196,096 K	C:\DeviceManagerDemo\server\bin\java.exe
ibase.exe	10916	1	00	11,800 K	C:\DeviceManagerDemo\server\bin\ibase.exe

3.3 TCP Ports Occupied by the Demo

Question

Which TCP ports are occupied by the Demo?

Answer

Perform the following steps to check which TCP ports are occupied by the Demo:

1. Choose **Start > Run**.
The **Run** dialog box is displayed.
2. Enter **cmd** and click **OK**.
The command line interface (CLI) is displayed.
3. Enter **netstat -abno**, and press **Enter**.
Port usage is displayed. You can see that TCP ports **8080**, **8088**, and **8989** are occupied.

```
TCP 0.0.0.0 8080 0.0.0.0 LISTENING 8964
[java.exe]
TCP 0.0.0.0 8088 0.0.0.0 LISTENING 2948
[httpd.exe]
TCP 0.0.0.0 8989 0.0.0.0 LISTENING 10916
[ibase.exe]
```

3.4 Solving the Problem of TCP Port Occupation by Other Processes

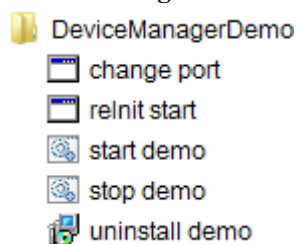
Question

How to solve the problem of TCP port occupation by other processes?

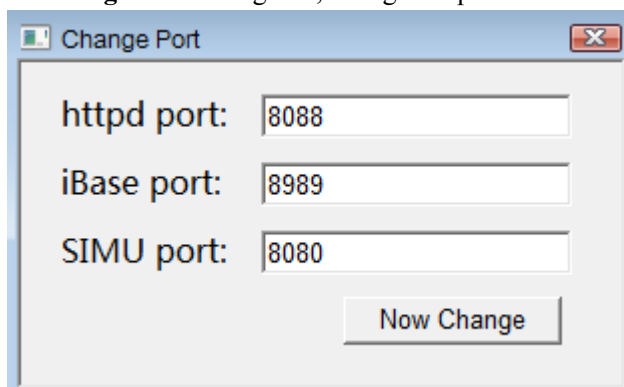
Answer

The Demo needs to use TCP ports **8080**, **8088**, and **8989**. Ensure that the ports are not occupied by other processes when starting and running the Demo. If any of them is occupied, perform the following:

1. In the desktop of host, choose **Start > All Programs > DeviceManagerDemoforTV300R003C20 > change port**.

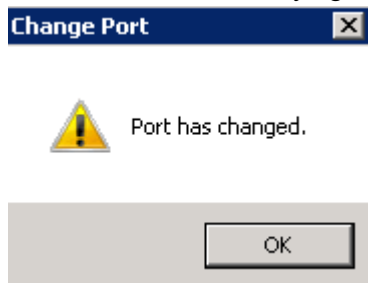


2. In **Change Port** dialog box, change the port value according to the actual circumstance.



 **NOTE**

- Modifying **httpd port** will impact the Demo login. After modification, the port must be replaced with the modified value when logging into the Demo.
 - The value range of port is 1 to 65535. It is recommended to use the value after 1024.
3. Click **OK** to finish modifying the port.



3.5 Disk Space Used by the Demo

Question

How much disk space is used by the Demo?

Answer

The Demo uses about 237 MB of disk space. This number is for reference only. The actual disk space the Demo uses is subject to the released version.

3.6 How to initialize the Demo data?

Question

After Demo being used, some initial data has been changed (for example, create a new LUN or delete an existing file system). How to restore the Demo data to initialization?

Answer

- The solution is as below:
 - a. In the desktop of host, choose **Start > All Programs > DeviceManagerDemoforTV300R003C20 > reInit start**.
The **Loading** dialog box is displayed.
 - b. Wait until the dialog box disappears, re-log into Demo. The Demo data has been restored to initialization.

A How to Get Help

If a tough or critical problem persists in routine maintenance or troubleshooting, contact Huawei for technical support.

For any problem experienced with using Demo, feed back at <http://support.huawei.com/ecommunity/bbs/10225947.html>.

Huawei provides users with timely and efficient technical support through the regional offices, secondary technical support system, telephone technical support, remote technical support, and onsite technical support.

Contents of the Huawei technical support system are as follows:

- Huawei headquarters technical support department
- Regional office technical support center
- Customer service center
- Technical support website: <http://support.huawei.com/enterprise/>

You can query how to contact the regional offices at <http://support.huawei.com/enterprise/>.