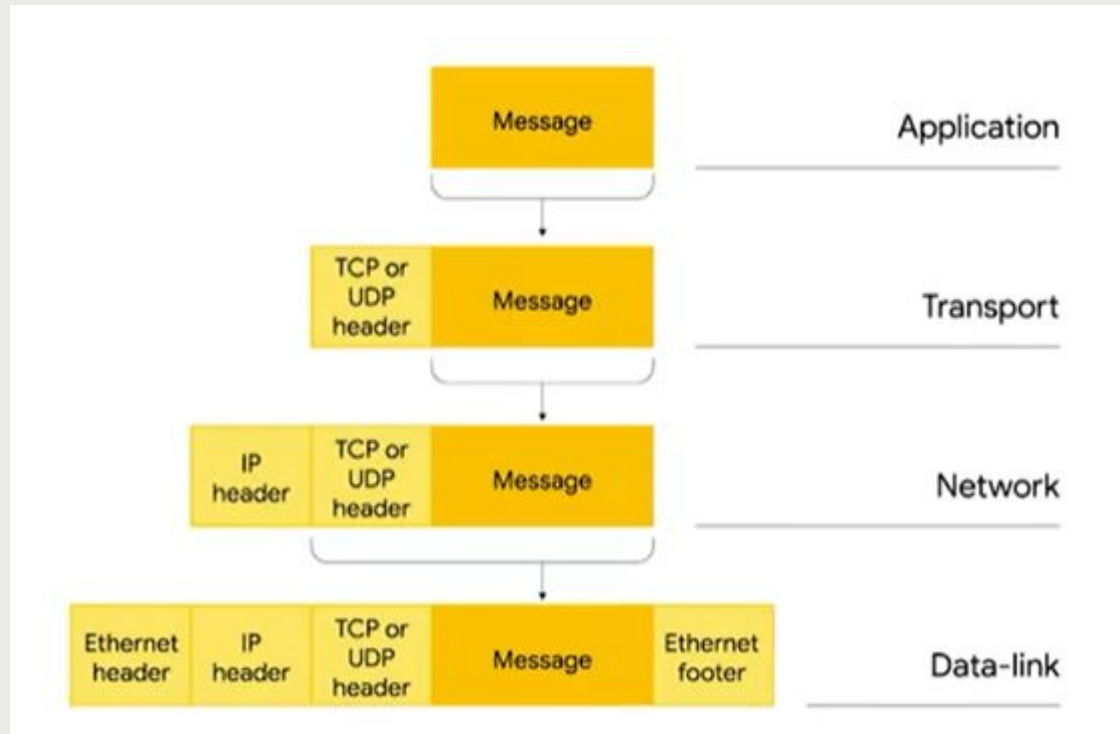
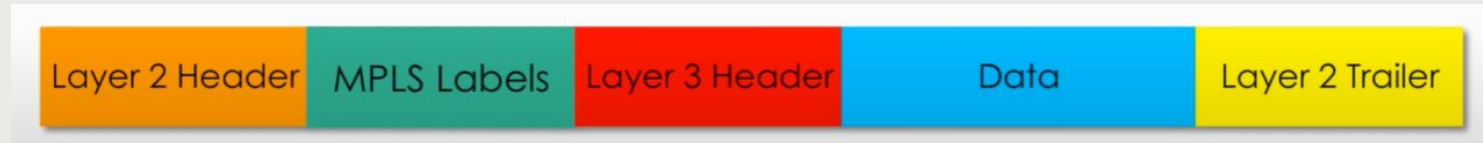


MPLS

Multiprotocol Label Switching



Network Address	Netmask	Gateway Address	Interface	Metric
127.0.0.0	255.0.0.0	127.0.0.1	127.0.0	1
0.0.0.0	0.0.0.0	198.21.17.7	198.21.17.5	1
56.0.0.0	255.0.0.0	213.34.12.4	213.34.12.3	15
116.0.0.0	255.0.0.0	213.34.12.4	213.34.12.3	13
129.13.0.0	255.255.0.0	198.21.17.6	198.21.17.5	2
198.21.17.0	255.255.255.0	198.21.17.5	198.21.17.5	1
198.21.17.5	255.255.255.255	127.0.0.1	127.0.0.1	1
198.21.17.255	255.255.255.255	198.21.17.5	198.21.17.5	1
213.34.12.0	255.255.255.0	213.34.12.3	213.34.12.3	1
213.34.12.3	255.255.255.255	127.0.0.1	127.0.0.1	1
213.34.12.255	255.255.255.255	213.34.12.3	213.34.12.3	1
224.0.0.0	224.0.0.0	198.21.17.6	198.21.17.6	1
224.0.0.0	224.0.0.0	213.34.12.3	213.34.12.3	1
255.255.255.255	255.255.255.255	198.21.17.6	198.21.17.6	1

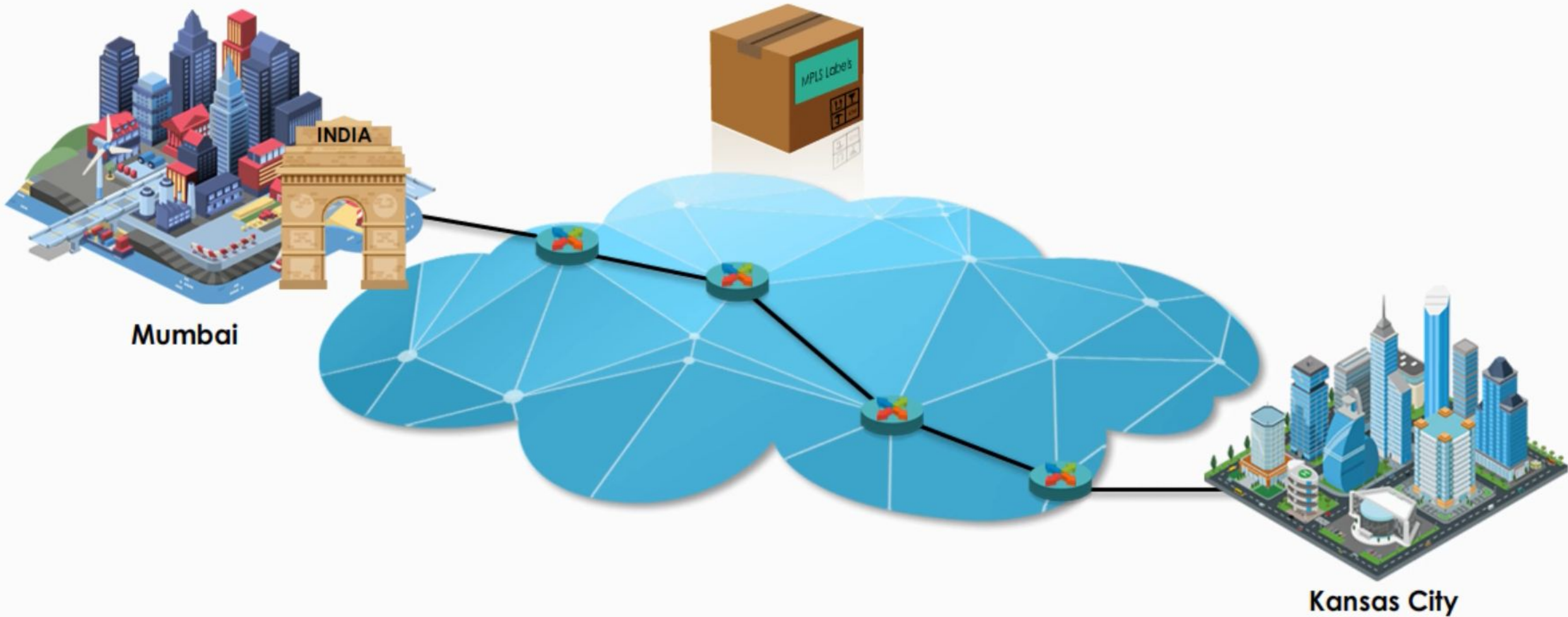




Mumbai



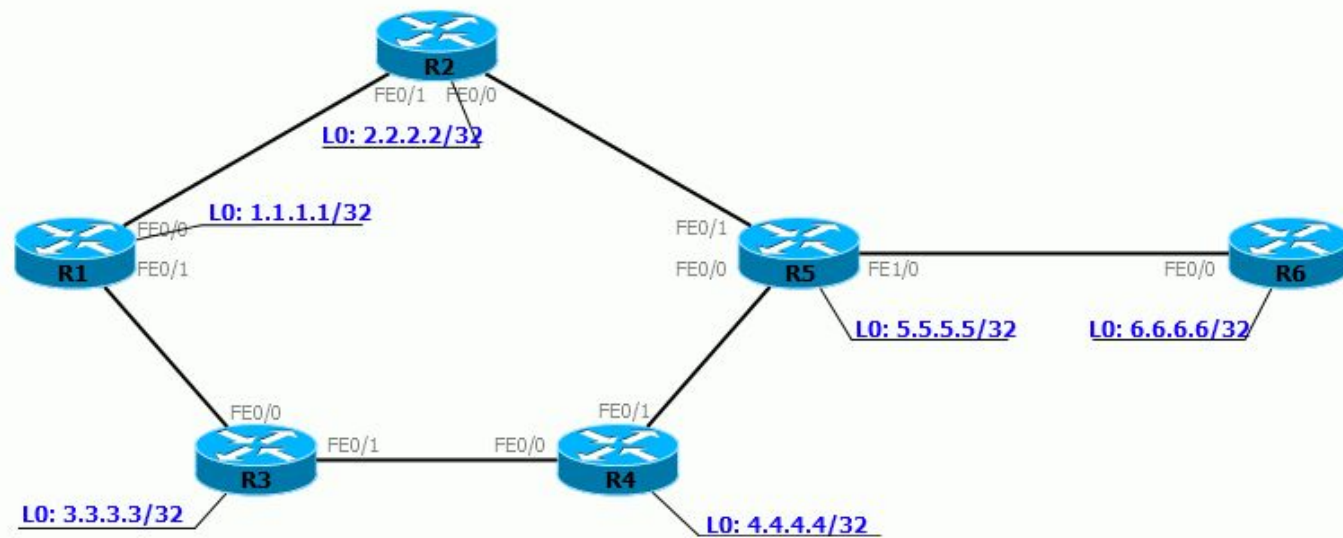
Kansas City

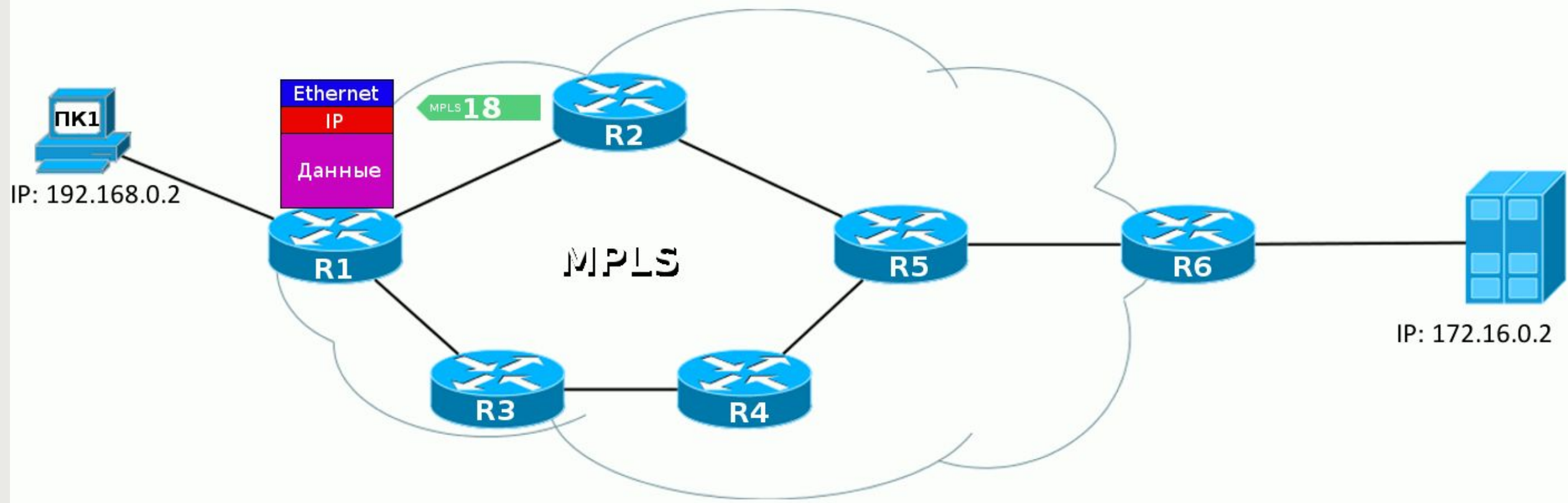


R1	Куда	Выходная метка	Интерфейс
	6.6.6.6	18	FE0/0

R2	Входная метка	Выходная метка	Интерфейс
	18	20	FE0/0

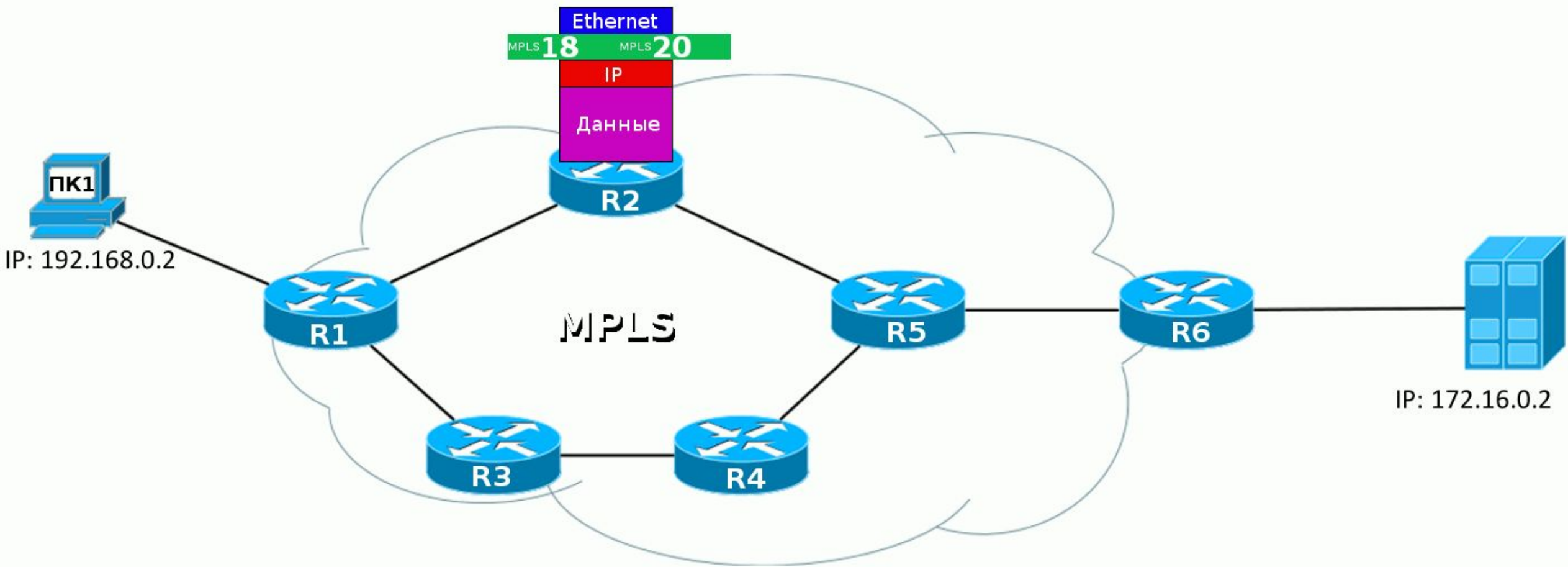
R5	Входная метка	Выходная метка	Интерфейс
	20	0	FE1/0

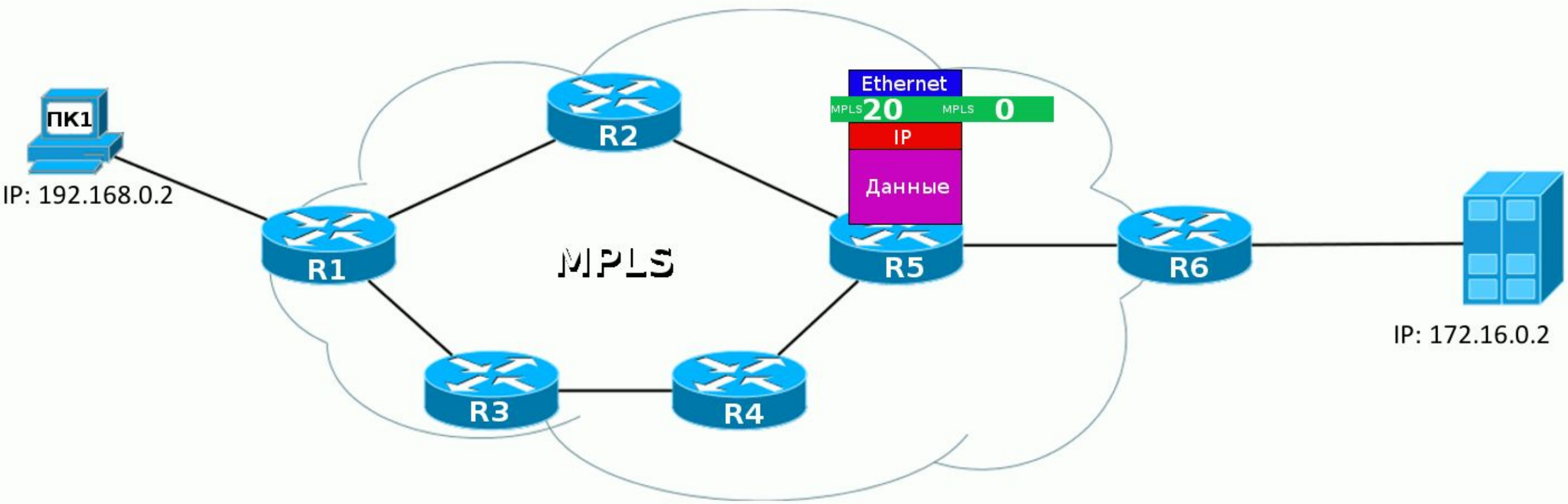


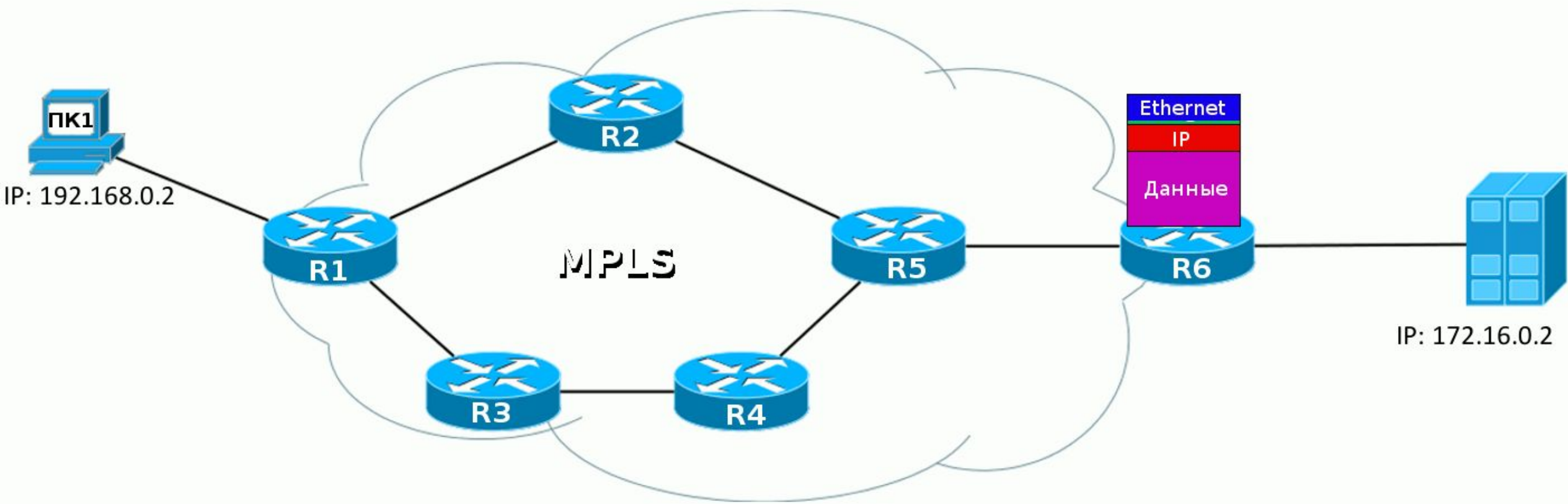


```
R2#sh mpls forwarding-table 172.16.0.0
```

Local tag	Outgoing tag or VC	Prefix or Tunnel Id	Bytes tag switched	Outgoing interface	Next Hop
18	20	172.16.0.0/24	590	Fa0/0	10.0.25.5







**Формат записи в стеке
меток**

32 бита			
20 бит	3 бита	1 бит	8 бит
Label	TC	S	TTL

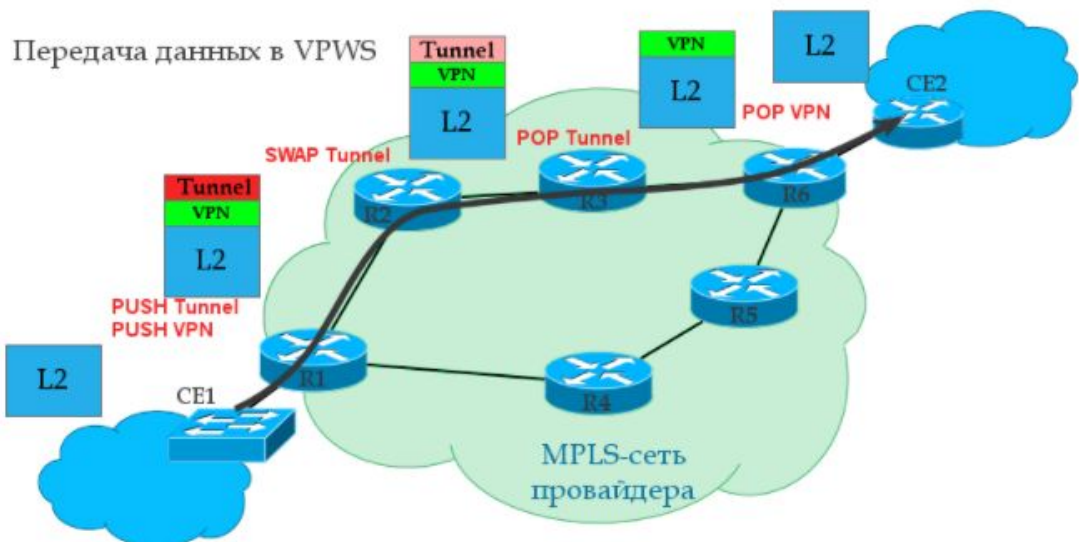
Security

Quality of service

Flexibility

**Traffic
engineering**

Передача данных в VPWS



Клиент 1

Клиент 2

